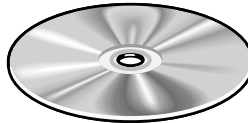


Getting Started with Your IMAQ System

1 Install the NI-IMAQ Software

Insert
CD



Need more information?
See your IMAQ hardware user manual.

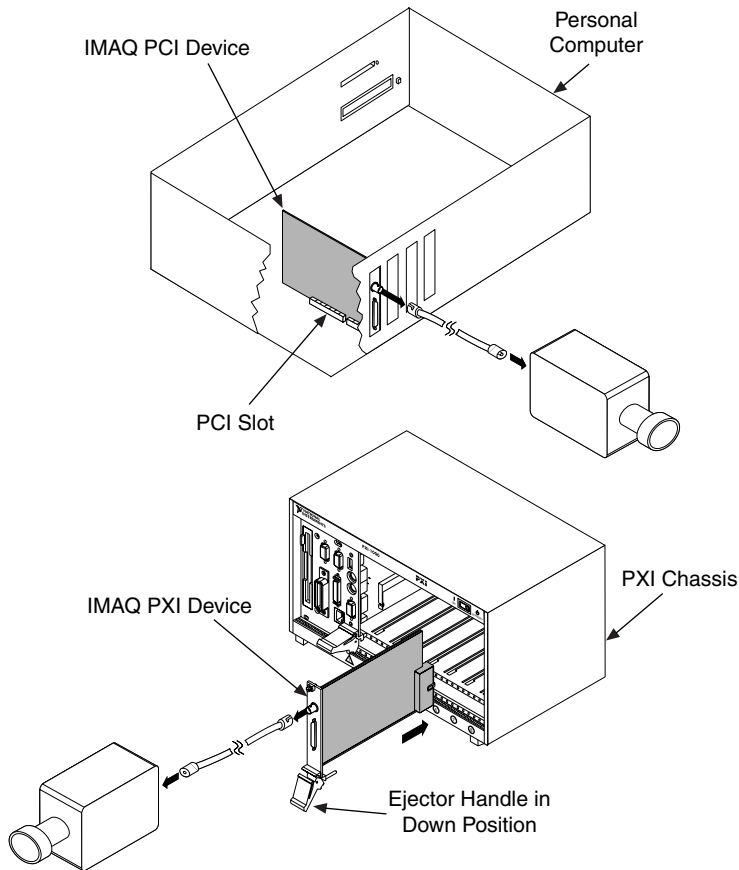
2

Install Your IMAQ Hardware and Connect Your Camera



Caution

Turn the power off and unplug your computer before installing your hardware. Wait for any motherboard LEDs to power off before proceeding, since some computers remain powered for some time after being unplugged.



Note

Follow the instructions in your computer documentation to install your IMAQ device.

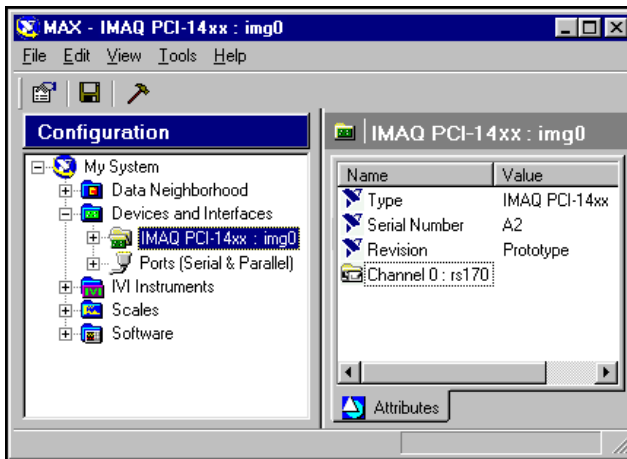


Need more information?
See your IMAQ hardware user manual.

3 Run Measurement & Automation Explorer and the NI-IMAQ Diagnostics



Double-click on the Measurement & Automation icon on your desktop. You can use MAX to modify camera and board properties. Once you have saved these properties, they become your default settings for all NI-IMAQ or IMAQ Vision applications.



Click on the plus sign next to **Devices and Interfaces** to reveal a list of your installed IMAQ devices.



Click once on the IMAQ device you want to test. Click the **Diagnostic** button on the toolbar to open the diagnostics window. Click the **Run Tests** button to run the diagnostics.

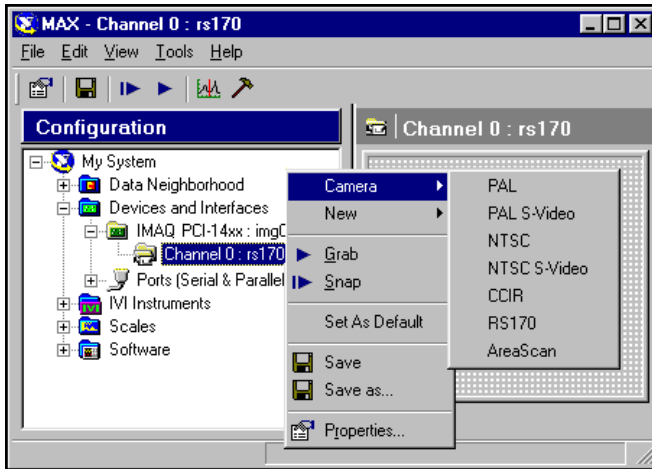


Click the **Properties** button on the toolbar to view or modify the interface file.



Need more information?
See the Measurement & Automation online help (Help»Help Topics menu item).

4 Select a Camera File and Acquire an Image



Click on the plus sign next to your IMAQ device to list the available channels.

Right-click on the channel to obtain a list of cameras.

Choose the appropriate camera type from the list. Camera type selection varies according to which IMAQ device is installed.

If you are acquiring a color image, make sure you choose NTSC or PAL, whichever applies to your camera.



Select the camera and click the **Properties** button on the toolbar to view or modify the camera file.



Click the **Snap** button on the toolbar to acquire your first image.



Click the **Grab** button on the toolbar to acquire images continuously. This allows you to focus your camera.



Need more information?

See the Measurement & Automation online help (Help»Help Topics menu item).

